



Love to Learn; Learn to Love



St Paul's CE VA Primary School

PROSPECTUS



# Hello and welcome to St Paul's C of E Primary School

**For us here at St Paul's, our children are at the heart of all we do and we continually strive to provide them with the very best education, not only developing our pupils academically but also personally, helping them to be prepared for life beyond primary school. This belief is underpinned by our school motto "Love to Learn; Learn to Love".**

The fact that we are a church school is central to our aims and ethos. The Christian values of respect, love, responsibility, courage and perseverance form a firm moral foundation to build upon. It is our key aim of wanting our children to achieve these skills, values and attitudes that will enable them to attain high standards and equip them for life.

At our school, we are a community. We are driven to ensure that all within our community experience kindness, respect, warmth, safety, inclusivity and learning that will not only be engaging and stimulating but also life-long. We are a welcoming and supportive school and this extends beyond our pupils to our parents and families and into our local community. We recognise the crucial

role that parents have to play in the education of their children; learning is at its best when there are strong partnerships between home and school. Parents are invited to assemblies, open mornings and a variety of meetings, as well as coming in to read and help with other activities.

We offer a great variety of cross-curricular activities both after school and during the school day. Some of these are provided by external agencies but many are run voluntarily by our dedicated school staff. Not only do these develop teamwork and

other skills, they also increase self-esteem and a general enjoyment of school.

Please take some time now to look through our prospectus and see what St Paul's has to offer. We would love nothing more than to give you a tour of our school so that we can show you more of what life is like here. Please contact our school office to arrange a tour of our school. We look forward to meeting you soon.

Luke Varney  
Headteacher

Justice  
Peace  
Hope  
Forgiveness  
Friendship  
Wisdom







# Our Christian Ethos and Vision

**St. Paul's Church of England Primary School, Chipperfield is a village church school that values our strong links with parents, the parish and the community. Our school motto: "Love to Learn; Learn to Love" is at the heart of all that we do. We believe that by fostering a love of learning and of one another, our children will be equipped to attain the highest possible standards and to be caring and responsible individuals.**

The fulfilment of our motto means that our school is a happy, caring community where our children achieve well. We value and demonstrate the Christian values of love, honesty, understanding and respect for others through working together as part of the school, church, village and world communities.

## St Paul's C of E Primary School

We aim to demonstrate **Christian values** of love, honesty, understanding and respect, by working together in school, church, village and world communities, celebrating differences. To flourish and achieve academic **skills** through a broad, balanced curriculum with imaginative, supportive, challenging teaching. To achieve **attitudes** of enthusiasm, confidence, perseverance and a love of learning.

**The Greatest Commandment** Mark 12:31 "Love the Lord your God with all your heart and with all your soul and with all your mind and with all your strength. Love your neighbour as yourself. No other commandment is greater than these."

Who is your neighbour? The Good Samaritan Luke 10:25-37  
Treat other people as you would like them to treat you.

# EYFS (Early Years Foundation Stage)

**The Foundation Stage is inclusive of sessional Nursery and Reception classes. Every child deserves the best possible start in life and the support that enables them to fulfil their potential. Children develop quickly in the early years and together we aim to make the most of their talents and abilities as they grow.**

Below are the four guiding principles that shape the practice in our Nursery and Reception classes:

- Every child is a unique child, who is constantly learning and can be resilient, capable, confident and self-assured.
- Children learn to be strong and independent through positive relationships.
- Children learn and develop well in enabling environments, in which their experiences respond to their individual needs and there is a strong partnership between practitioners and parents and/or carers.
- Children develop and learn in different ways and at different rates.

There are seven areas of learning and development in the early years:

## Prime areas

Igniting children's curiosity and enthusiasm for learning, and for building their capacity to learn, form relationships and thrive through:

- Language and Communication
- Physical Development
- Personal, Social and Emotional Development

## Specific areas

Through which the three prime areas are strengthened and applied. The specific areas are:

- Literacy
- Mathematics
- Understanding of The World
- Expressive Arts and Design

Within the EYFS, not only is it really important what children learn but it is also essential we provide children with the skills and knowledge of how we learn - we call these the characteristics of effective learning. The characteristics of effective learning are as follows:

## Characteristics of effective learning: Playing and Exploring

### Engagement

- Finding out and exploring
- Playing with what they know
- Being willing to 'have a go'

### Active Learning

#### Motivation

- Being involved and concentrating
- Keep trying
- Enjoy achieving what they set out to do

### Creative and Critical Thinking

#### Thinking

- Having their own ideas
- Making links
- Working with ideas





# Our Curriculum Intent

**Here at St Paul's, our Curriculum is designed to inspire our children, creating awe, wonder and a love of learning. Our curriculum ensures each child is a successful learner, who enjoys learning, makes good progress and achieves well. We strive to develop confident individuals, able to live a safe, healthy and fulfilling life, and a responsible citizen, able to make a positive contribution to society.**

Using our Curriculum Drivers to underpin the design of our curriculum, staff have tailored what they teach so that our children have a range of opportunities and experiences to hone and develop their knowledge, skills and understanding, leading to a curriculum that is personalised, is broad and balanced and inspires children to learn.

There is high academic ambition for all pupils, rooted in our solid consensus of the knowledge and skills pupils need in order to take advantage of opportunities, responsibilities and experiences of later life. We have carefully studied evidence of research when developing and building our curriculum and consequently leaders are confident about the knowledge and skills pupils

need in order to take advantage of opportunities, responsibilities and experiences in later life, which is embedded into our curriculum.

At St Paul's, the curriculum is designed to: recognise children's prior learning, provide first hand learning experiences, allow the children to develop interpersonal skills, build resilience and become creative, critical thinkers. The ability to learn is underpinned by the teaching of basic skills, knowledge, concepts and values. We constantly provide enhancement opportunities to engage learning and believe that childhood should be a happy, investigative and enquiring time in our lives where there are no limits to curiosity and there is a thirst for new experiences and knowledge.

Our curriculum is designed and sequenced so that new knowledge and skills build on what has been taught before and towards clearly defined end points, informing what pupils need to know and be

*Our Curriculum is designed to inspire our children, creating awe, wonder and a love of learning*

able to do to reach those points. We have created comprehensive long-term and medium-term plans and through our monitoring and evaluating cycle, we see the impact the curriculum is having on pupils.

Community involvement is an essential part of our curriculum as we celebrate local traditions, learning new skills to enable the children to take an active role in events throughout the year. Working with the community – local, national, international is a key aspect of our curriculum as we seek to learn from and give to each community.

Children leave the school with a sense of belonging to a tight knit community where they have the confidence and skills to make decisions, self-evaluate, make connections and become lifelong learners. Our pupils study the full curriculum; it is not narrowed. Pupils study a broad range of subjects, including all national curriculum subjects as shown in our curriculum intent statement and long-term and medium-term plans.

We ensure all of our pupils have access to a wide range of cultural experiences, including music and dance performances at major events, theatre, museum and gallery visits and places of worship. The curriculum also extends beyond the academic as we support pupils to develop in many diverse aspects of life. There is a strong emphasis on children's personal development through our values, including the development of learning, thinking, personal, social and emotional skills, resilience, responsibility and respect. We put a strong emphasis on pupil voice to encourage independent and engaged learners, promoted through school's embedded pupil leadership opportunities. PSHE and SMSC are embedded into our curriculum planning and the ethos of the school.



*Children leave the school with a sense of belonging to a tight knit community*





# Our Curriculum Drivers



**Our aim is to provide our children with an engaging, exciting and empowering curriculum that equips them for today and tomorrow. We believe that childhood should be a happy, investigative and enquiring time in our lives, where there are no limits to curiosity and there is a thirst for new experiences and knowledge.**

We view the curriculum as the totality of every planned/unplanned experience and interaction that pupils encounter within our school. It informs every aspect of our practice and culture from academic content to personal development, including the drive to instil and display the Christian values and ethos.

Our curriculum is driven by the following aspects, which aim to improve the life chances of all children by ensuring each child becomes and believes that:

- I am a life-long learner
- I am a future leader
- I am a global citizen
- I am ME!

## Collective Worship

**Our school was formed by a Trust Deed as the school of the parish of St. Paul's Chipperfield and has retained close links with the Parish Church. Collective Worship is therefore in accordance with the "Principles and Practices of the Church of England."**

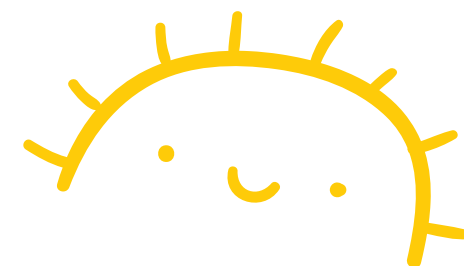
Collective worship, within a Christian context, plays an important part in the daily life of our school. It is an oasis in the day when the community

meets together in a calm and peaceful atmosphere and is given the opportunity to reflect and participate. It is quality time and represents something special and separate from the ordinary school routine. Throughout our Collective Worship in the week, children will have the opportunity to:

- greet each other in peace
- explore and reflect upon school, local and global discussion points and matters in the world
- share stories and books

- engage in song and singing and celebrate their achievements and hard work.

In all contexts, our worship is made complete with a final prayer that children are able to sit quietly and reflect upon. We regularly attend services and celebrations in our local church.



## Pupil Leadership

**At St Paul's, we are passionate about enabling our children to have the skills, confidence and ambition to become successful and responsible citizens who actively contribute to the world they live in.**

We believe that this begins at primary school and we use our curriculum to help us deliver this. Part of this work is inspiring and promoting the leaders of tomorrow and here at school we have a Pupil Leadership Programme to do just this. Pupils across KS2 have the opportunities to be appointed to a range of different pupil leadership roles following a process of application and formal interview. Before leaving

St Paul's, our Y6 pupils are given the responsibility to support the recruitment of the next set of pupil leaders, helping to train and mentor them for the role.

Our Pupil Leadership Roles include:

- Playground Patrol
- Sports Committee
- House Captains
- School Ambassadors
- Subject Leaders







## Enrichment and Extra-Curricular

**Educational visits are part of the school's provision. During the year, we take children out of the school on visits to enhance and extend their learning, enriching their schooling and broadening their life experiences.**

The school will always inform parents if we are planning to organise any educational visit off site. Our trips and enrichment experiences are planned in advance and are a balance of visits to places that link directly to a year group's curriculum and trips that are designed to provide a variety of experience and fun, including visits to the theatre, Harry Potter Studio Tour and our highly popular Y6 residential. We also make regular use of our neighbouring common and woodland area to promote learning outdoors and support wellbeing.

We do not require permission when taking children out of school during school hours; however, for educational visits further afield or that extend past the normal school day, we will send you a form for you to return, requesting your permission.

We offer a wide range of extra curricular activities at St Paul's. Most are run by skilled members of staff and others by outside agencies. The clubs are decided based on our pupil's interests and requests and where possible, we try to provide a range of different after school clubs. For further information about the clubs on offer right now, please visit our website.



*Trips are designed to provide a variety of experience and fun*

## Admissions

**The school is committed to ensuring that children have smooth transitions into their classes happily. During the summer term prior to starting school, parents receive information about their child's induction process. Other introductory meetings are also arranged to support the children in settling in successfully when they begin.**

Children who start school in the middle of a year will have an introductory meeting with a member of staff prior to entry. Both parent and child need to attend these meetings. Our school's admission policy can either be requested through the school office or can be found on the school's website – [www.stpauls909.herts.sch.uk/our-admissions](http://www.stpauls909.herts.sch.uk/our-admissions)

## Uniform

**Our pupils proudly wear our school uniform, ensuring that they feel and are recognised as part of our school community.**

**Our uniform is as follows:**

- Red cardigan or sweatshirt (bearing the school emblem)
- White shirt or polo shirt
- Grey skirt, pinafore, trousers or shorts
- Red, grey, black or white socks or tights
- Plain black shoes/trainers suitable for both indoor and outdoor use
- Summer – red/white checked dress (optional)
- Reception and Nursery children may wear black tracksuit bottoms

**PE Kit**

- White t shirt (Plain or with logo)
- Red shorts
- Plain black tracksuit bottoms
- Plain black or red sweatshirt/top (optional for warmth)
- Plain trainers (supportive for running around)
- Socks as above

Our school sweatshirts, polo shirts and PE T shirts are available from: Peter Spivey (HH) Ltd, 71 The Marlowes, Hemel Hempstead HP1 1LF 01442 256760 or online from [www.yourschooluniform.com](http://www.yourschooluniform.com)

## Attendance

**At St Paul's, we want all children to achieve their full potential. Good attendance ensures that your child will not be missing out on any crucial learning.**

We know that children attending school regularly and on time has positive implications, not only for their academic progress but also for their mental health and well-being. A child missing even one lesson may have a significant impact on their learning and well-being. If your child is absent for any reason, please phone the school in the morning on the first day of absence to let us know. In the case of sickness or diarrhoea, your child must be kept off school for 48 hours once this has stopped. Our Attendance Officer will contact you if there are any concerns regarding absence.

## School Times

**8.30am** – Children may enter the playground to wait for the start of the school day. A member of the Senior Leadership Team will greet the children at the school gate each morning.

**8.45am** – Registration (compulsory start of the day)

**9.00am – 10.30am** – Morning Session 1

**10.30am – 10.45am** – Break Time

**10.45am – 12.00pm** – Morning Session 2

**12.00pm – 1.00pm** – Lunch Time

**1.00pm – 3.15pm** – Afternoon Sessions

**3.15pm** – End of school day (compulsory end of day)

**3.15pm – 4.15pm** – Extra-curricular clubs

*At St Paul's, we want all children to achieve their full potential*





# Keeping in touch

## Enquiries

At St Paul's CE VA Primary School we try our best to keep lines of communication open as much as possible. If you have any concerns or need to share information regarding your child, please make an appointment to see your child's class teacher at a time that is mutually convenient. Alternatively, if you are unsure who you need to speak to, ask a member of the office team and they will organise a meeting with the correct party. Copies of school policies are available on our website.

## Communication

We email all our parents regular newsletters as well as uploading them onto our website. We also send out letters relating to particular activities when appropriate. You may also be contacted with various reminders via text message and you can find up to date information about the school on our website. In addition, occasionally it may be necessary for us to call you, so please ensure that the contact details we hold for you are up to date.

# Friends

## of St Paul's PTA

**The Friends of St Paul's Parent Teacher Association was set up to provide fundraising support for St Paul's CE VA Primary School.**

Every parent and carer of a child attending the school is automatically a member of the Friends of St Paul's, as are all the teaching and non-teaching staff at the school. If parents would like to get involved, no matter how small you think your contribution would be, the Friends of St Paul's would love to hear from you. New faces and fresh ideas are always welcome!

No one is expected to contribute more time than they are able, to events or activities. Everyone is welcome at the meetings which are held approximately every half term on a weekday evening. It is a great way of getting to know other parents within the community and getting involved in helping your child's school.

Some of the events which have been organised in the past include:

- Summer Fair
- Christmas Fair
- School Lottery
- Easter Fair
- Many cake sales

